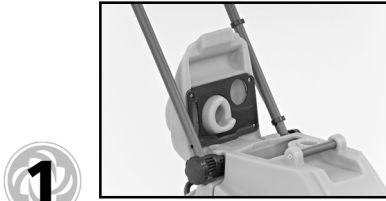


Extractor How To

Before Each Use



1

- Check electrical cords for any breaks or tears
- Fill clean water solution tank 3 inches below the top lip
- Check all hose connections



2

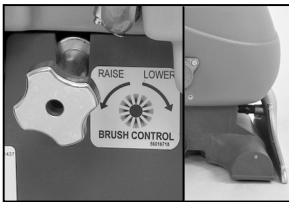
- Plug extractor into wall
- Adjust handle before using



3

- Vacuum area to be cleaned and remove any large debris

During Use Operating



4

- Adjust floor brush so that machine moves gently with little resistance. (This will be tested by turning the brush on)
- When brush adjustment is made, turn on vacuum.



5

- Move at a comfortable, but productive pace
- Be sure to overlap your cleaning edges by 2-6 inches



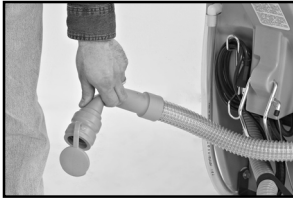
6

- Upon completion stop solution and allow vacuum to pick up residual moisture 3 feet after solution has stopped being used
- Unplug electrical cords and wrap appropriately

Extractor How To

At the End of Each Use of Your Advance Extractor

7



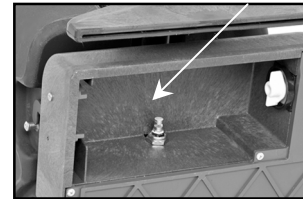
- Drain and thoroughly rinse the dirty water recovery tank
- Drain and rinse clean-water tank

8



- Remove brush, rinse and remove all fibers wrapped around brush – use razor or knife if necessary
- Remove and rinse tank filters
- Remove and thoroughly rinse and wipe off vacuum shoe

9



- Tip Machine back and wipe down all surfaces
- Check spray nozzles and wipe off with clean towel

10



- Store machine with brush in “up” position